

DALMAN Co. (PVT) Ltd.

33KV PFC-38 Silicone rubber Fuse Cutout



Technical Specifications:

Rated Voltage (KV)	Rated Current (A)	Interrupting current (KA)	Power Frequency withstand voltage (KV)	Impulse withstand Voltage (KV)	Creepage distance to ground (mm)
36	100	12,16 (Asym)	80	190/218	1212

Manufacturer of M.V. Drop-out Open Fuse Cutouts and Fuselinks

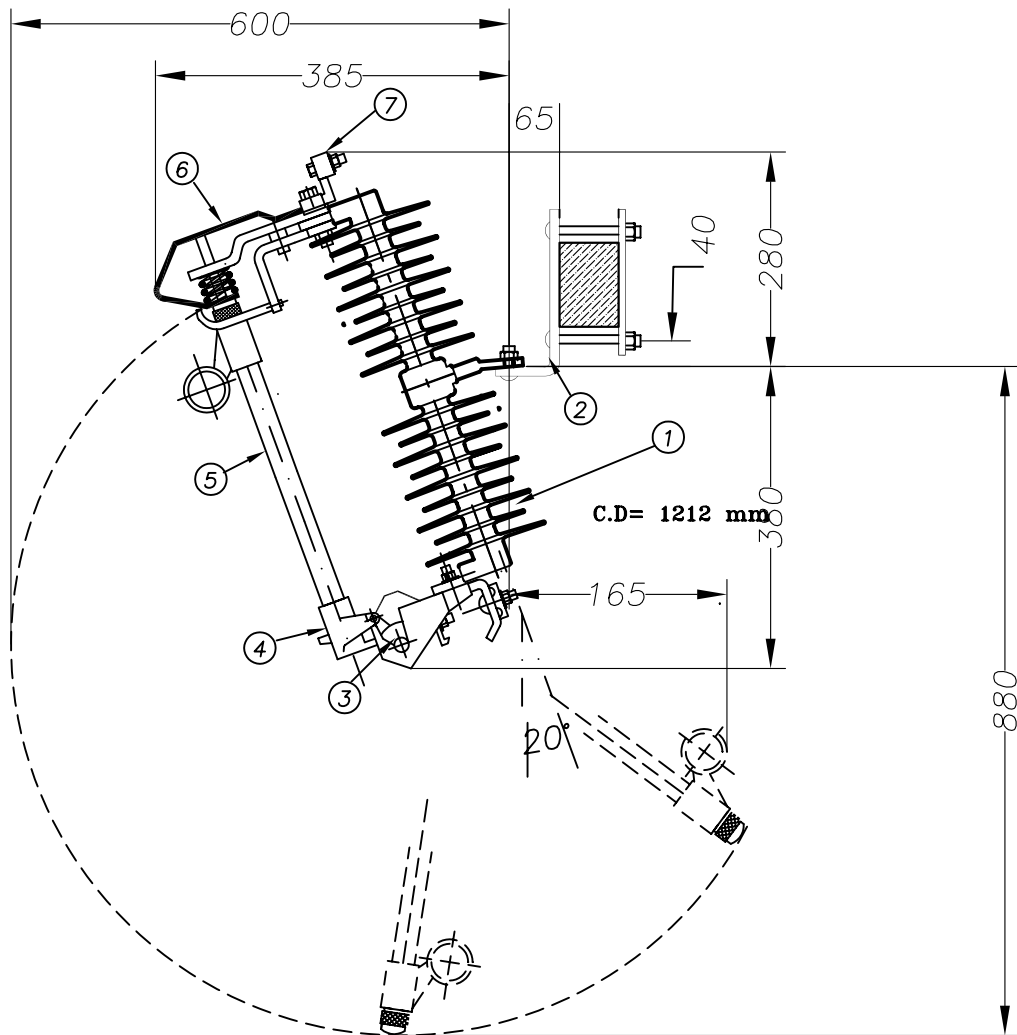
DALMAN CO. (PVT) Ltd.
Razi Bldg. Fakhre- Razi St.
Enghelab Ave.
TEHRAN 13147 - IRAN
P.O.Box 13145 - 1858

Tel. 66469022, 66409993
Fax. +98 21 66410040
E-mail:
Info@dalman-co.com
www.dalman-co.com

Factory: Km 5, Qazvin Road
P.O.Box 34815 – 389
TAKESTAN – IRAN
Tel. 522 5131,2
Fax. +98 282 522 1548

Banker:
Bank Melli Iran
Daneshgah Branch
Acct.: 87/700385

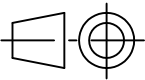





Drop-Out Fuse Cutout

a) Creepage Distance	mm	1212
b) Nominal Voltage	KV	34.5
c) Max. Design Voltage	KV	38
d) Continuous Current	A	100
e) Interr. Current (Sym.)	KA	8
f) Min. Power Frequency Withstand	KV(Dry)	80
g) Min. Power Frequency Withstand	KV(Wet)	70
h) Min. Impulse Withstand	KV	190

7	DIECAST BRASS	1
6	Electric Copper	1
5	Vulcanized Tube Reinforced with Fiber Glass	1
4	DIECAST BRASS	1
3	DIECAST BRASS	1
2	NEMA Mounting Bracket	1
1	Silicone rubber insulator	1
Item	Description	Qty

توضیحات کلیه ابعاد به میلی متر		 انطباقات عمومی FREE TOLERANCES ISO 286-2		 DALMAN		DALMAN CO.(PVT) LTD, TEHRAN Ordered by:		کارفرما:	
تاریخ	تغییرات	نام	شماره	تاریخ	نام	Dwg.Title:	عنوان نقشه:	جنس	
			۱		طراوت	Drop out Fuse Cutout Type PFC 38 KV, 100 A	شماره نقشه:	وزن	
			۲		رسام			مقیاس	
			۳		کنترل			تعداد	
			۴		تصویب ۱	Ref. Code	شماره مرجع	برگ	
			۵		تصویب ۲	DWG.NO:	شماره نقشه		
							3101-1212-P/R1		

DALMAN COMPANY

APPLICATION

DALMAN Type FC Cutouts provide complete over current protection to overhead distribution system rated 15 KV though 38 KV, whether applied to overhead transformers, capacitors, cables, or lines. These cutouts accommodate universal button head fuse links through 200A.Fuseholders with / or without arc shortening rod for heavy –duty, extra heavy- duty, or ultra heavy –duty interrupting ratings and 300A disconnecting switchblade interchangeable with fuse holder, equip FC Cutouts for a wide range of application.

SPECIFICATION

Voltage Rating (KV)		B.I.L (KV)	Current Rating		Creepage Distance to Ground	Catalog Number 51- -
Nominal	Max. Design		Cont.(A) [▲]	Interrupting Asym.(KA)		
25	27	140	100	8	13" (330mm)	511-11-131
				12,16 [•]	13" (330mm)	511-21-131*
25	27	150	100	8	17" (440mm)	511-11-171
				12, 16 [•]	17" (440mm)	511-21-171*
34.5	38	185	100	8	38" (960mm)	511-11-381-P▶
				12, 16 [•]	38" (960mm)	511-21-381-P*
34.5	38	170	100	8	48" (1212mm)	511-11-481-P▶
				12, 16 [•]	48" (1212mm)	511-21-481-P*

▲ 200A fuse holder is also available

* Equipped with arc shortening rod, required removable button head fuse link.

● One shot rating based on replacement of cut out tube only.

▶ With polymer insulator.

All ferrous parts are hot dip galvanized per ASTM A- 153

Fuse Cutouts with higher Creepage distances, and interrupting currents upon request.

STANDARD: ANSI C37.42 , IEC 60282-2

ISO 9001:2000 CERTIFIED COMPANY

<http://www.dalman-co.com> Email : info@dalman-co.com