

# DALMAN Co. (PVT) Ltd.

## 24KV PFC-27 Silicone Rubber Fuse Cutout

511-21-341-P



Rated Voltage (KV)	Rated Current (A)	Interrupting current (KA)	Power Frequency withstand voltage (KV)	Impulse withstand Voltage (KV)	Creepage distance to ground (mm)
24	100	8 Sym.	50	125	860



Manufacturer of M.V. Drop-out Open Fuse Cutouts and Fuselinks

DALMAN CO. (PVT) Ltd.  
Razi Bldg. Fakhre- Razi St.  
Enghelab Ave.  
TEHRAN 13147 - IRAN  
P.O.Box 13145 - 1858

Tel. 66469022, 66409993  
Fax. +98 21 66410040  
E-mail:  
Info@dalman-co.com  
www.dalman-co.com

Factory: Km 5, Qazvin Road  
P.O.Box 34815 – 389  
TAKESTAN – IRAN  
Tel. 522 5131,2  
Fax. +98 282 522 1548

Banker:  
Bank Melli Iran  
Daneshgah Branch  
Acct.: 87/700385

# DALMAN COMPANY

## APPLICATION

DALMAN Type FC Cutouts provide complete over current protection to overhead distribution system rated 15 KV though 38 KV, whether applied to overhead transformers, capacitors, cables, or lines. These cutouts accommodate universal button head fuse links through 200A. Fuseholders with / or without arc shortening rod for heavy –duty, extra heavy- duty, or ultra heavy –duty interrupting ratings and 300A disconnecting switchblade interchangeable with fuse holder, equip FC Cutouts for a wide range of application.

## SPECIFICATION

Voltage Rating (KV)		B.I.L (KV)	Current Rating		Creepage Distance to Ground	Catalog Number 51- -
Nominal	Max. Design		Cont.(A)	Interrupting Asym.(KA)		
25	27	140	100	8	13" (330mm)	511-11-131
				12,16	13" (330mm)	511-21-131*
25	27	150	100	8	17" (440mm)	511-11-171
				12, 16	17" (440mm)	511-21-171*
25	27	125	100	8	24" (600mm)	511-11-241-P
				12, 16	24" (600mm)	511-21-241-P*
25	27	185	100	8	34" (860mm)	511-11-341-P
				12, 16	34" (860mm)	511-21-341-P*

\* Equipped with arc shortening rod, required removable button head fuse link.

One shot rating based on replacement of cut out tube only.

With polymer insulator.

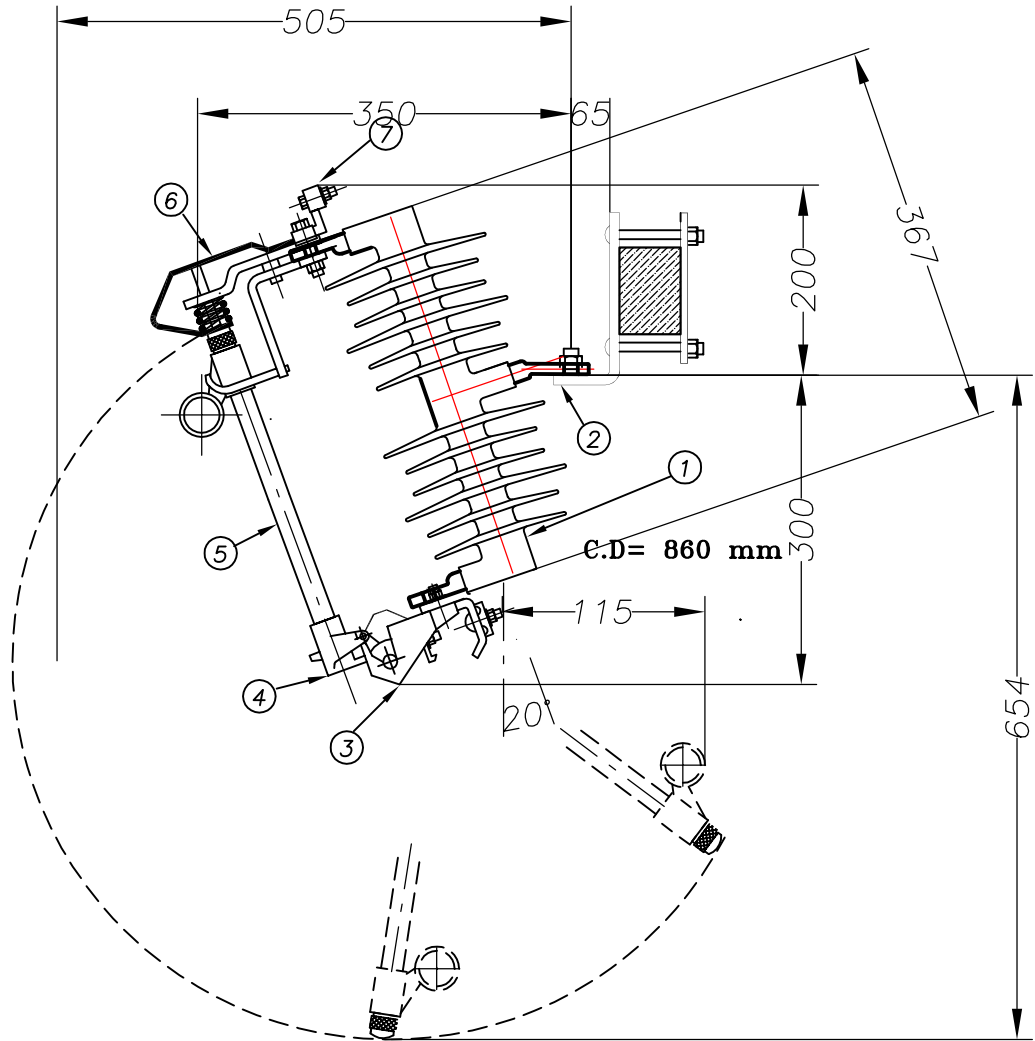
All ferrous parts are hot dip galvanized per ASTM A- 153

Fuse Cutouts with higher Creepage distances, and interrupting currents upon request.

**STANDARD:** ANSI C37.42 , IEC 60282-2

ISO 9001:2008 CERTIFIED COMPANY

<http://www.dalman-co.com> Email : [info@dalman-co.com](mailto:info@dalman-co.com)



## Drop-Out Fuse Cutout

a) Creepage Distance	mm	860
b) Nominal Voltage	KV	20
c) Max. Design Voltage	KV	24
d) Contineous Current	A	100
e) Interr. Current (Sym.)	KA	8
f) Min.Power Frequency Withstand	KV(Dry)	50
g) Min. Impulse Withstand	KV	125

7	DIE CAST BRASS	1
6	Electric Copper	1
5	Vulcanized Tube Reinforced with Fiber Glass	1
4	DIE CAST BRASS	1
3	DIE CAST BRASS	1
2	NEMA Mounting Bracket	1
1	Silicone Rubber Insulator	1
Item	Description	Qty

ALL DIMENSIONS IN MM			FREE TOLERANCES ISO 286-2	
----------------------	--	--	------------------------------	--

DALMAN CO.(PVT) LTD, TEHRAN	
Ordered by:	کارفرما:

تاریخ	تغییرات	نام	شماره	تاریخ	نام
			۱		طراحی
			۲		رسم
			۳		کنترل
			۴		تصویب ۱
			۵		تصویب ۲

Dwg.Title:	Drop out Fuse Cutout Type PFC 24KV, 100 A, Silicone Rubber
Ref. Code	
DWG.NO:	3134-P27